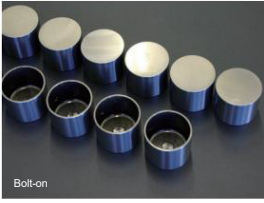


# S20 ENGINE PARTS

## S20 Long Lifter



In addition to the high strength design, the overall length is 26mm and the outer diameter is slightly thicker than the OEM value to reduce the play of the lifter. This allows the camshaft profile to be transmitted to the valves without loss, reducing tappet noise and restoring the original engine performance.

Manufacturing method	Machined
materials	SKD-11
heat treatment	Carburized + Tufftride
surface treatment	Inner surface: Shot, Outer surface: Polished finish
hardness	HRC45-55
outer diameter	φ32.480-32.490 (slightly thick)
effective length	Long type (total length 26mm)
clearance	2-3/100 (design target value)
price	¥132,000 /24 pcs

## S20 reinforced valve set



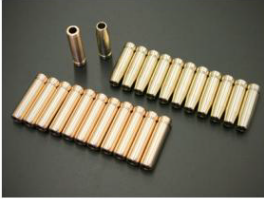
High-performance valves were created based on metal materials that are resistant to heat and wear. The valves, which have passed strict inspection standards including "forging + precision machining + heat treatment + quality control," demonstrate their potential and prove their high quality even under harsh operating conditions.

¥60,000 /SET  
¥2,500 / Single

- Material: SUH35
- Tempered hardness: HRC35
- Surface treatment: Tufftride
- Surface hardness: HV500 or higher
- Manufacturing method: Forged + machined

- Valve diameter: IN 32φ EX 29.5φ (K4 standard size)
- Total length: IN 106.9mm EX 106.6mm (K4 standard size)
- This valve is designed for K4. When using with K3, please use the valve lifter and valve cotter for K4 together.

## S20 reinforced valve guide



The wear resistance, heat conductivity, and seizure resistance required for valve guides are achieved by using two different materials according to the characteristics of the IN and EX, and by precision machining of the inner and outer diameters. This minimizes the clearance with the valve, improving the accuracy of the valve movement and enabling higher rotation.

Material: IN Aluminum bronze EX Phosphor bronze

Outer diameter STD ¥48,000  
Outer diameter 0.03OS ¥48,000  
\*Set price

\*Please use FJ20 valve oil seal and valve spring stepped seat together. Valve guides are sold individually. Please check the guide hole diameter of the cylinder head before ordering.

## S20 Reinforced seat ring (sintered alloy)



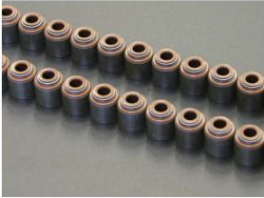
The genuine leaded seat ring cannot handle unleaded gasoline and wears out. This seat ring is made of sintered alloy, which has excellent wear and heat resistance, and stabilizes the contact surface of the valve seat from city driving to sports driving.

¥48,000 /SET  
¥2,000 / Single

\*External diameter oversized type

	Outer diameter	Inner diameter	Height
IN	34.4	28.0	8.5
EX	32.8	26.3	9.2

## FJ20 Repurposed valve oil seal



This is a valve oil seal for the FJ20 that is required when using the KAMEARI reinforced valve guide with the S20. Unlike the genuine O-ring type, it has high sealing performance and prevents oil leakage.

Set price: ¥8,880  
Single price: ¥370

\*Please use together with the valve spring stepped seat. We recommend the KAMEARI reinforced valve guide compatible with the FJ20 valve oil seal. When using genuine valve guides, chamfer the outer periphery of the upper end face of the valve guide.

## S20 K4 Reinforced Valve Cotter



It prevents variations in spring set length caused by over-revving or surging, allowing you to maintain the best condition for a long period of time.

1 set price: ¥19,200

## S20 valve spring stepped seat & washer



**S20 Valve Spring Stepped Seat KAMEARI** This stepped seat is essential when using reinforced valve guides. It fits perfectly with the double spring and stabilizes the valve spring.

Material: Machined Chromoly 1 set price: ¥24,000



**S20 Valve spring washer seat cutting can increase** the protrusion or reduce the load due to sagging of the valve spring by placing a washer under the stepped seat.

- Thickness 0.5mm ¥350/1 piece
- Thickness 1.0mm ¥350/1 piece

## S20 Standard valve spring set



The metal fatigue of valve springs that have been in use for about 50 years since their manufacture is immeasurable. The valves have become less tightly attached due to the amount of wear that has occurred from the initial load setting, and at the same time, engine output has dropped significantly. This product is a high-performance valve spring developed with the latest technology to restore the original performance of the S20 engine.

Compatible with: S20 vehicles using standard camshafts

Price: ¥60,000/SET

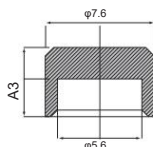
## S20 Reinforced Valve Cap



specification	
•Material	SCM435 (chrome molybdenum steel)
•Hardness	HCR45-49
•Heat treatment	Quenched and tempered
•Surface treatment	Barrel polished
•Thickness	1.25-2.65 mm(0.05 increments) tolerance +0.03 -0
•Shape	Genuine same shape
•Price	Price: ¥1,500

A dimension (tolerance +0.03 -0)

A=1.25	A=1.55	A=1.85	A=2.15	A=2.45
A=1.30	A=1.60	A=1.90	A=2.20	A=2.50
A=1.35	A=1.65	A=1.95	A=2.25	A=2.55
A=1.40	A=1.70	A=2.00	A=2.30	A=2.60
A=1.45	A=1.75	A=2.05	A=2.35	A=2.65
A=1.50	A=1.80	A=2.10	A=2.40	



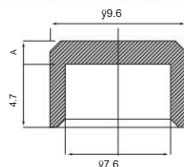
## S20 Outer Clearance Cap



This outer cap is used when the thickness of commercially available valve caps is insufficient. It is a convenient part that allows you to adjust the clearance by simply placing it on the genuine cap (Kameari valve cap) when using a high cam that has been finely processed by genuine processing, or when using a K4 lifter on a K3 head.

•Thickness (1mm/2mm/3mm)

Price /1 piece ¥1,700



A dimension (tolerance +0.03 -0)  
A=1.0 A=2.0 A=3.0